
WARBURTON

A GUIDE
TO YOUR
STAY

to do & see



RIVERLIN

COTTAGE . LODGE . RETREAT

GET IN TOUCH



RIVERLINRETREAT@GMAIL.COM



0401 757 731



[@RIVERLINRETREAT](https://www.instagram.com/RIVERLINRETREAT)



[@RIVERLINRETREAT](https://www.facebook.com/RIVERLINRETREAT)



WWW.RIVERLINRETREAT.COM



WARBURTON

LOCAL
THINGS

to do & see

LOCAL

PLACES TO SEE

WARBURTON & SURROUNDS



THE REDWOOD FORREST

Cement Creek Rd, East Warburton VIC 3799

These towering Redwoods are the stuff of fairytales; let your imagination run wild as you get lost among the 1400 Redwoods that reach endlessly towards the sky above or enjoy the otherworldly tree art that sometimes adorns the forest floor. It's also a dream playground for kids or grandkids, who will adore hiding between the giants and running along the soft, leaf-littered forest floor.

www.thecommonwanderer.com/blog/redwood-forest-warburton-guide



LA LA FALLS

La La Falls Rd, Warburton VIC 3799

The La La Falls are also popular amongst hikers, as there are a variety of walking tracks around this area. The drive to the walk is only just a short drive from the Warburton Township. The walk to the falls is approximately 3.2kms and is well signed. The track is graded and suitable for people of all fitness levels as the grade can be classified as easy overall.



UPPER YARRA RESERVIOR

Reefton - Upper Yarra Dam

Lying at the uppermost region of the Yarra River, this scenic reservoir is the perfect spot for some magnificent sightseeing, scenic walks, picnicking, and camping. here There are two popular walking tracks within the parklands: The Fern Gully Track which is an easy 1km loop; and the Batts Creek Track, a 1.5km return trip.



WARBURTON WATER WORLD

20 Woods Point Rd, Warburton VIC 3799

This FREE water park is fantastic and perfect for all ages. We love that there is plenty of space and the kids keep moving all around the aquatic zone. Park, toilets and bbq areas.

LOCAL

PLACES TO SEE

WARBURTON & SURROUNDS



RAINFOREST GALLERY

Mt Donna Buang Rd

The Warburton Rain Forest Gallery, a raised walkway that stretches for 40 meters, is located halfway up Mt. Donna Buang.

One of three unique observation platforms in Australia, the gallery offers breathtaking views of the rainforest below. From the platform, visitors get a bird's eye view of the many trees, some as tall as 65 meters.



MT DONNA BUANG

Mt Donna Buang

Set at 1245 metres above sea level, the peak of Mt Donna Buang is one of the best ways to enjoy the Yarra Valley's panoramic views. From this viewpoint, you will get a broad view of the manicured gardens and dense woodlands found within the Yarra Ranges.

The drive up to the summit is beautiful as you can admire the views of Warburton and the Yarra Valley along the wayqr code.



O'SHANNASSY AQUEDUCT TRAIL

Dee Road, Millgrove and Yuonga Road, Warburton.

This trail stretches for over 30 kilometers between fern gullies and creeks and gives some of the best views of the valley below. Walkers can hop-on / hop-off the trail from the main visitor areas for a shorter walk. The trail itself is a gentle grade however access from the valley is more challenging.



YARRA RANGES NATIONAL PARK

Mt Donna Buang Road

Head to Mt. Donna Buang where you have great views of the Yarra Valley. Halfway up the mountain, stop by the Rainforest Gallery, walk through the treetops and stop on a 40-meter-long observation platform. Here you will see the lush rainforest from 15 meters above the ground. At the summit, there is a 21-meter-high lookout tower that offers panoramic views over Melbourne, the Yarra Valley, Dandenong, Cathedral Ranges, Mount Baw Baw.

LOCAL

PLACES TO SEE

WARBURTON & SURROUNDS



WARBURTON GOLF COURSE

Cement Creek Rd, East Warburton VIC 3799

Warburton Golf Club is a unique and very scenic course. Situated in the Yarra Valley, 90 minutes from Melbourne CBD, they can provide you with a fantastic golfing experience. Open 7 days a week, the equipment can be hired, carts, clubs, and buggies. They are a non for profit members club and love having visitors and are a fully licensed clubhouse.



BLUE LOTUS WATER GARDEN

2628 Warburton HWY, Yarra Junction, Victoria 3797

The Blue Lotus Water Garden houses two pristine lakes, each one boasting a myriad of water lilies and lotus flowers. There are three small dams edged by beautiful varieties of wildflower plants and exotic plant species. The parkland also has an exclusive area of river flats, which boasts eighty small ponds. Each of these ponds is filled with an array of lotus plants, which regularly blossom.



HEALESVILLE SANCTUARY

Glen Eadie Ave, Healesville VIC 3777

Healesville Sanctuary is one of Australia's most loved zoo attractions and houses thousands of Australian animals where visitors can get up close to these magnificent animals in a uniquely Australian bush setting.



WARBURTON TRAIL

Lilydale-Warburton

The trail commences at the end of the metropolitan rail network at Lilydale before heading through the increasingly rural landscape to the town of Warburton which is a quiet town nestled in the mountains. With a mountainous backdrop to see you on the way, this trail passes the Yarra Ranges National Park, vineyards, wineries and the Yarra River Valley.



LOCAL

PLACES TO SEE

WARBURTON & SURROUNDS



ADA TREE

Yarra State Forrest

The Ada Tree is beautiful, majestic and its size and age make it the biggest flowering tree in the Southern Hemisphere. At over 300 years old, the Ada Tree is the ultimate example of the beauty and history Baw Baw is known for.



7 ACRE ROCK

Bunyip Road

A short walk through regenerating Mountain Ash Forest leads to a granite outcrop offering a 270 degree view of the surrounding area. On a clear day there are spectacular views looking across Port Phillip Bay, Western Port Bay and Gippsland.



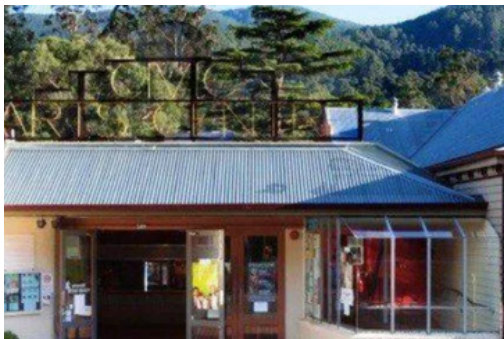
WARBURTON MARKETS

River front/Water Wheel/Main Street

Summer produce Market - Held each Friday night between 4.30pm to Sunset.

Artisan Market - Handcrafted goods and locally grown fruit & vegetables, preserves, plants and flowers. Held on the 1st Sunday of every month, except January.

Warburton Community Market - is held on the second Saturday of the month and sells a range of fresh produce and crafts.



UPPER YARRA ARTS CENTER

Main St- Warburton

The Upper Yarra Arts Centre is a melting pot for the diverse cultural and arts scene in the Yarra Valley.

Located in Warburton, the centre comprises a studio gallery, the Mecca Theatre and the Mechanics Hall. There is also a cinema showing new release films.

LOCAL

PLACES TO SEE

WARBURTON & SURROUNDS



BUDDHA BODHIVANA MONASTERY

780 Woods Point Rd, East Warburton VIC 3799

Beautiful and peaceful place to be at. A hidden gem, not a tourist place. A must-try if you are in the area. If you want to offer food to the monk, ensure to come early around 9 am. You can bring food to share the meal later with everyone for lunch. The beautiful scenery surrounding too. Very good experience to feel part of the community. Great to hear/learn lessons from the monks too.



MILLGROVE LOOKOUT

Dee Road, Millgrove

Continue along Dee Rd, parallel to the river, head over the white bridge and up the hill. You will pass some farms and head up towards a dirt road. Turn right up the hill into the car park and the aqueduct trail for beautiful views of the Yarra Valley



TOMMY FINS TROUT FARM

3175 Warburton Hwy, Warburton

Grab a fishing rod and go fishin' to catch a trout. Fishing rod and bait hire available. They will even fillet your fish for you and have BBQs available to cook it for lunch!



KUTH KILN

Main St- Warburton

The Upper Yarra Arts Centre is a melting pot for the diverse cultural and arts scene in the Yarra Valley.

Located in Warburton, the centre comprises a studio gallery, the Mecca Theatre and the Mechanics Hall. There is also a cinema showing new release films.

LOCAL

PLACES TO SEE

WARBURTON & SURROUNDS



SHIPROCK WATERFALL

Kuth Kiln Regional Park

Shiprock Falls is a partly obscured but noisy little cascade running over large boulders, not far from where the giant Ship Rock ran aground. There is a viewing platform from which you can get a glimpse of the falls, safely from the side.



WARBURTON WATER WHEEL/VISITOR CENTER

The Waterwheel Visitor Information Centre in the township of Warburton provides tourist information, and hosts an art gallery and an indoor forest at the Environment Discovery Centre. There is also a must-see retail outlet called Warburton Valley Handmade that showcases locally handmade goods from artists and craft workers in the region.



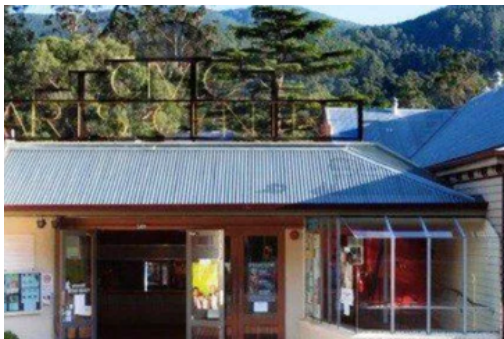
MARKETS

River front/Water Wheel/Main Street

Summer produce Market - Held each Friday night between 4.30pm to Sunset.

Artisan Market - Handcrafted goods and locally grown fruit & vegetables, preserves, plants and flowers. Held on the 1st Sunday of every month, except January.

Warburton Community Market - is held on the second Saturday of the month and sells a range of fresh produce and crafts.



ARTS CENTER

Main St- Warburton

The Upper Yarra Arts Centre is a melting pot for the diverse cultural and arts scene in the Yarra Valley.

Located in Warburton, the centre comprises a studio gallery, the Mecca Theatre and the Mechanics Hall. There is also a cinema showing new release films.

PLACES TO EAT



THE ALPINE HOTEL

3340 Warburton Hwy, Warburton VIC 3799

Newly renovated in 2021, it is Warburton's local pub. The historic pub set in a gorgeous town with lovely views over the Yarra River. Great location is next to Lilydale-Warburton Rail trail. **TOP PICK**

Call: (03) 5966 2411

Website: <https://alpineretreat.com.au/>

LITTLE JOES

3416 Warburton Hwy, Warburton VIC 3799

Wood-fired pizza, Yarra Valley wine, artisan pastry, locally roasted coffee, food all day, tunes, beer garden

Call: (03) 5966 5635

Website: <https://www.facebook.com/warburtonlittlejoe>



THE WARBURTON HOTEL

2882 Warburton Highway, Wesburn, Victoria 3799

'The West' is a local pub that has been newly renovated in 2019 with open fireplaces and a warm cozy atmosphere in the bistro and a separate bar area with pool table and duke box. Nice outdoor seating area.

Call: 5967-1090

Website: <https://warburtonhotel.com.au/>

LAUNCHING PLACE HOTEL

170 Warburton Hwy, Launching Place VIC 3139

The Home Hotel is a historic, locally owned pub located within the beautiful Yarra Valley. Situated opposite the Yarra River and adjacent to the Warburton Rail Trail, the Home Hotel is your perfect destination for a casual drink or dinner with the family.

Call: (03) 5967 3303

Website: <https://www.launchingplacehomehotel.com.au/>



PLACES TO EAT



NOOJ



NOOJ PUB

411 Mt Tourist Road, Noojee 3833

A very popular pub often with live music on the weekend. Great food, views and atmosphere. Experience Noojee Hotel's relaxing, family-friendly, country pub atmosphere in the beautiful, tranquil bush surrounds of Noojee.

Call: (03) 56289514

Website: <https://www.noojeehotel.com.au/>

REEFTON PUB

1600 Woods Point Rd, Mcmahons Creek VIC 3799

Est. 1886, the Reefton is one of Victoria's last great country hotels and a unique social hub that brings together the local community and welcomes visitors from near and far.

Call: (03) 5966 8555

Website: www.facebook.com/WoodsPointRoad/



BABAJIS INDIAN

Attraction location or address

From tropical Kerala, South India
...to the forests of the Yarra Ranges, sure to hit all the tastebuds.

Call: (03) 8288 2982

Website: <https://www.babajiskitchen.com.au/>



CAFE & DRINKS

THREE SUGARS CAFE



3389 Warburton Hwy, Warburton- Main St

A trendy well-known and popular cafe' in town. Good food, people and location. One of our top picks. **OUR PICK**



RIVERVIEW CAFE & WINE BAR



3373 Warburton Hwy, Warburton Vic. 3799

Balcony breezes in summer and open fire warmth in winter. An atmosphere that is informal friendly and welcoming, it reflects the attitude of good staff and food. Views of the river and peaceful.



SILVA COFFEE ROASTERS- CAFE



Shop 1/3400 Warburton Hwy. Warburton 3799

Delicious artisan, fresh fairtrade coffee. Modern cafe style, chic and scenic with a view over the main town and mountains. House-made treats that are amazing!! **TOP PICK FOR COFFEE**

Call: 03 5926 5054

Website: www.silvacoffee.com.au



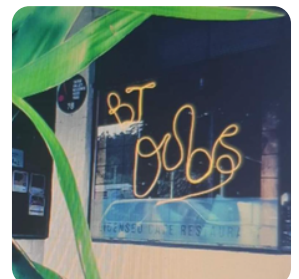
BT DUBS



3399 Warburton Hwy, Warburton Vic

Some heroes wear capes, some make your coffee. We are those heroes. BT Dubs Cafe is here to inspire the human spirit, one person, one cup, one community at a time.

Website: www.facebook.com/BTDUBScafe



CAFE \ SWEET DRINKS

COG BIKE CAFE



42 Station Road, Warburton

Bike repairs, sales & hire. Organic fair-trade coffee, good food. Brands: Trek, Garry Fisher, Schwinn, Cannndale, Norco, Merida, Apollo, Lapierre.

Call: (03) 5966 2213

Email: info@cogbikecafe.com

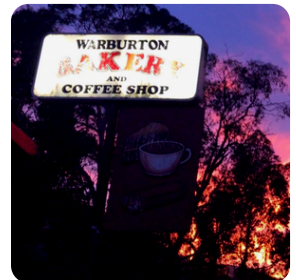


WARBURTON BAKERY



3415 Warburton Hwy, Warburton- Main St

Bakery by the river, with a range of hot pies, coffee, cakes, sandwiches, rolls and large variety of cold drinks.



WARBURTON VILLAGE PIZZA CAFE



3393 Warburton Hwy, Warburton Vic. 3799

Family-owned specialises in Vegetarian and Vegan Pizza. They cater for everybody; also serve traditional pizza and gluten-free pizza, all lovingly handmade in-house. Also homemade icecream

Call: (03) 5915 5625

Website: www.warbypizza.com.au/



RAINBOW ICECREAM SHOP



Shop 1/3400 Warburton Hwy. Warburton 3799

The Rainbow Ice Cream Shop believes that having quality ice cream should be affordable for the whole family so that the budget goes further to enjoy the cafes and restaurants within Warburton.

Call: 0409 662 181

Website: www.warburtonicecream.com.au



ARTISIAN ICECREAM MILLGROVE



3399 Warburton Hwy, Warburton Vic

Cookie Grove - Here at Cookie Grove, we love a sweet moment matched with a sweet treat! We pride ourselves on creating our ice cream in house using regionally sourced ingredients from the Yarra Valley. Make sure to come into the cafe and see us next time on the Warburton Trail, Millgrove. **TOP PICK**

Website: www.cookiegrove.com



CAFE \ SWEET, DRINKS

CANDY EMPORIUM



1/3375 Warburton Hwy, Warburton VIC 3799

We carefully select our range to ensure that those wonderful favourites and old fashioned lollies are always available for you to enjoy, as well as some new fun treats to try or give to someone special **TOP PICK**

Website: www.warburtoncandyemporium.com.au



RED RELISH



2/2465 Warburton Hwy, Yarra Junction VIC 3797

Outstanding coffee & delicious meals cooked to order. We also have a delicious range of award-winning pies & quiches. Vegan & vegetarian meals are available. Our cakes and desserts will delight.

Fully licensed serving beer, wine or cider.

Call: (03) 5967 1628

Website: www.facebook.com/RedRelishCafe



NANCY'S CAFE

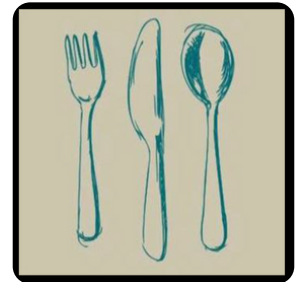


3/2460 Warburton Hwy, Yarra Junction VIC 3797

Wide range of savoury, sweet and excellent coffee. Using organic and local produce where and when available. Using locally roasted organic fair-trade coffee. Catering for many dietary requirements.

Call: (03) 5967 1593

Website: www.mryum.com/nancys



YARRA VALLEY ARTISIAN BAKERY



1/2876 Warburton Highway, Wesburn, Victoria 3799

you will see our team using traditional methods and techniques, premium Australian ingredients and fresh, seasonal, local produce to create artisan products we are truly proud of it! **TOP PICK**

Email: yvartisanbaker@gmail.com

Website: www.yarravalleyartisanbaker.com



THE FLYING APRON PATISSERIE



2874 Warburton Highway, Wesburn, VIC, Australia, Victoria

Some heroes wear capes, some make your coffee. We are those heroes. BT Dubs Cafe is here to inspire the human spirit, one person, one cup, one community at a time. **TOP PICK**

Email: helyingapron@gmail.com

Website: www.facebook.com/profile.php?id=100056417892473

